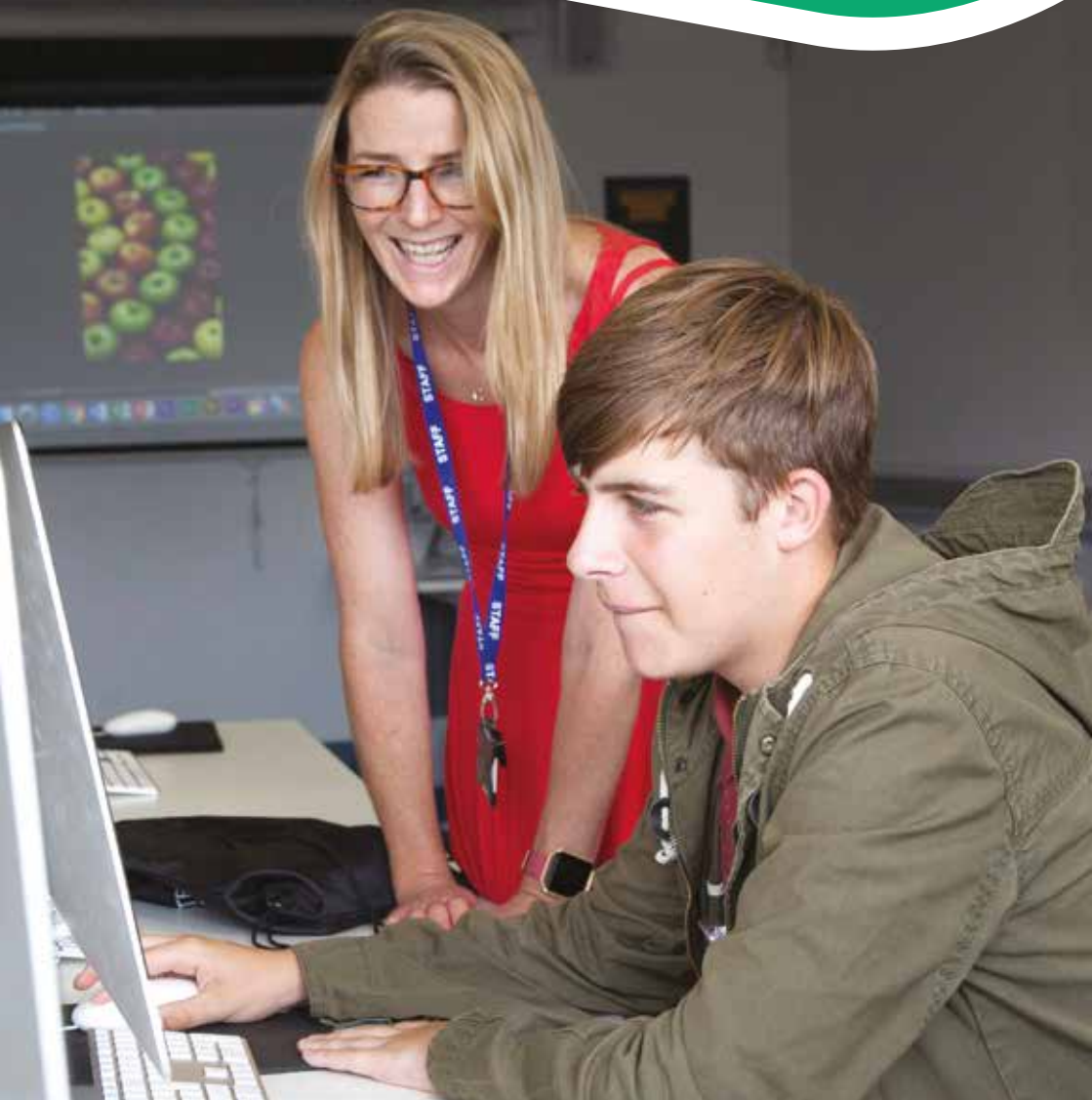


# POST-16

ACTIVITY PROGRAMME

2018-19



# Greater Manchester Higher

Is a collaborative network of higher education providers in Greater Manchester who are working together to raise the ambitions of young people and the awareness of higher education through providing impartial information, advice and guidance (IAG), alongside a menu of outreach activities.

**For more information about our programme, the activities featured in this booklet, and how to book please visit: [gmhigher.ac.uk](http://gmhigher.ac.uk) and use the 'search tool'.**

## ABOUT THE NATIONAL COLLABORATIVE OUTREACH PROGRAMME (NCOP)

We deliver the government-funded NCOP programme in Greater Manchester, a programme with the overall aim of reaching the government's goal of **doubling participation in Higher Education amongst disadvantaged groups by 2020**. Our programme was developed in consultation with teachers, advisors and other stakeholders. It is collaborative, impartial and targeted.

**Our activities are free**

## TARGETING

Based on government policy; our programme is targeted using learner postcodes. Support with targeting is available from your designated hub manager; these details can be found on pg. 11 of this brochure or on our website.

Schools eligible for the NCOP programme can access all of our events and activities.

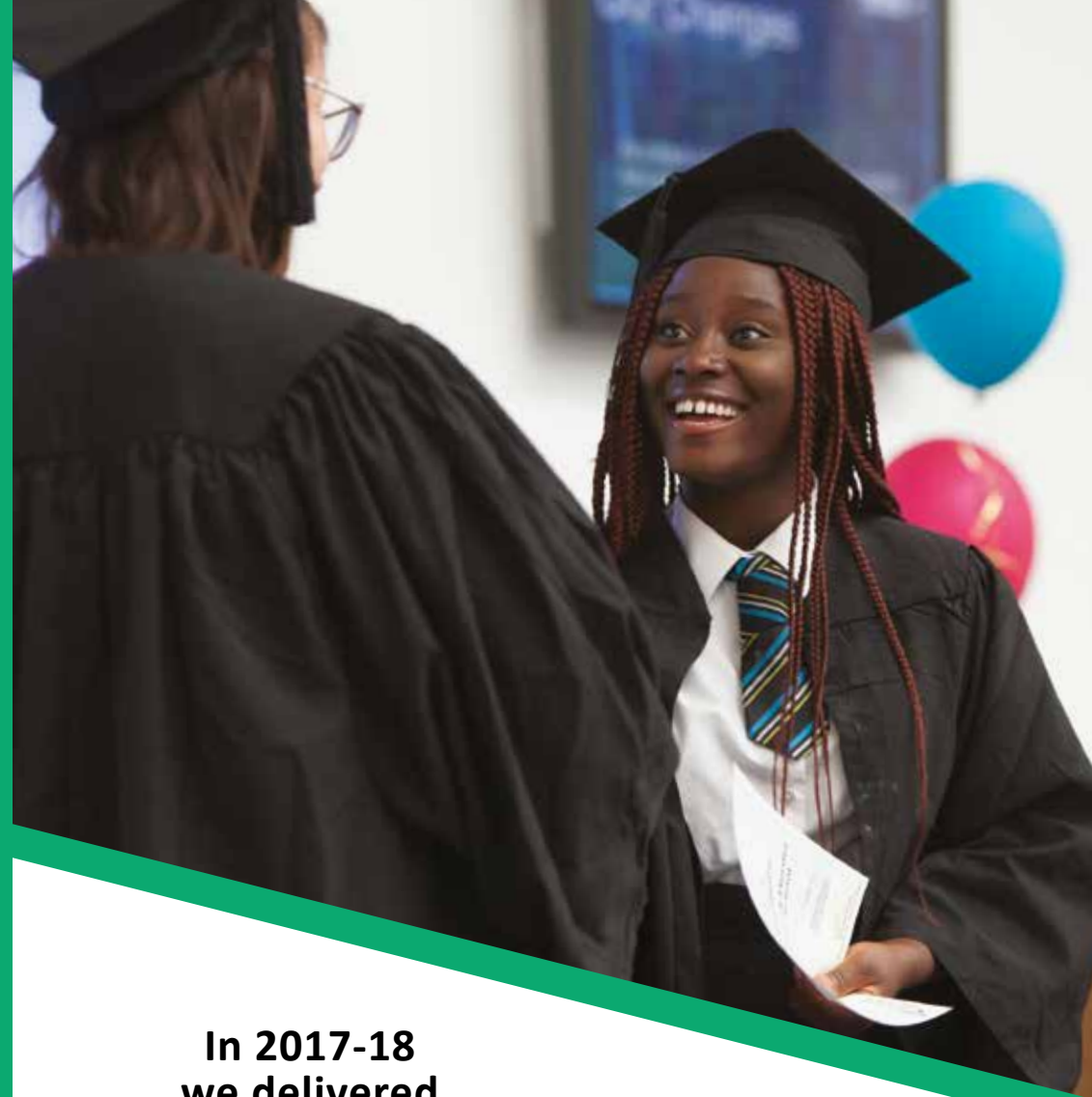
## ADDED VALUE

Greater Manchester Higher can support schools to work towards Ofsted objectives and the Department for Education's expectations for Careers Guidance and provider access to schools.

**Our activity can contribute towards multiple Gatsby Benchmarks, as well as Ofsted objectives for supporting learners to make 'choices about the next stage of their education (...)' from impartial careers advice and guidance' and ensuring learners are 'prepared for the next stage in their education, training or employment.'**

We have highlighted which activities contribute towards which **Gatsby benchmarks** using the below key:

- 1 A stable careers programme
- 2 Learning from career and labour market information
- 3 Addressing the needs of each pupil
- 4 Linking curriculum learning to careers
- 5 Encounters with employers and employees
- 6 Experiences of workplaces
- 7 Encounters with further and higher education
- 8 Personal guidance



**In 2017-18 we delivered**



**1118**  
activities with



**25,433**  
learners

## On-site <sup>7</sup>

Our IAG activities are delivered on site and offer an impartial perspective on both traditional and non-traditional pathways into higher education. We encourage you to book a number of these sessions sequentially to support your progression activities.



### Interview Skills

With the growth of Higher Level and Degree Apprenticeship pathways, which can be competitive, being prepared for a selection process can help learners. This workshop equips them with techniques and best practice for both types of interview and assessment, as well as tips on how to perform to the best of their ability.



### Managing your UCAS Offers and Preparing for Results Day

This session looks at what happens from the perspective of both the learner and the university or college. It provides an insight into the different types of offers made to learners (including unconditional offers) and how best to make informed decisions. It concludes by looking ahead to Results Day and preparing for all possible scenarios.

*On request, content can be split into two 20-minute presentations (on each theme).*



### Student Life

Hear directly from our student ambassadors who are studying for higher education qualifications in the region's universities and colleges. They will pass on their advice on to how to 'survive and thrive' at university through tackling issues such as budgeting, adapting to the new learning environment, preparing for the workplace and making the most of the student experience.



### Why HE? Researching Your Options

This session introduces learners to higher education and the lifelong benefits attending university can offer. It will also explore non-traditional routes, such as Higher and Degree Apprenticeships, as well as looking at options to study a HE qualification in a FE setting. The session will encourage learners to undertake their own research into different courses and options.

**SESSIONS:  
45MINS – 1 HOUR**

**NUMBER  
OF LEARNERS:  
UP TO 30**



### Degree or Apprenticeship?

This can be one of the main decisions for post-16 learners, and with the introduction of Higher and Degree Apprenticeships there is potential to have the 'best of both worlds', without the tuition fees.

The aim of the session is to provide learners with the knowledge required to make an informed decision about which pathway suits them. It will specifically look at earn-while-you-learn pathways to a HE-level qualification, where to source and research these vacancies and the 'pros vs cons' of apprenticeship pathways and traditional routes.



### Parents and Supporters Talks

Parents and supporters have a big influence on learners' decisions including what and where to study, but with so many changes going on in higher education, it pays to have an impartial insight into such decision making and where best to source the information that matters.

Our insights can help both learners and parents/supporters to make sense of the options available.

*Content can be adapted to suit your event.*



### Preparing for University Open Days

There are a range of university Open Days on offer across the region and nationwide, providing various information to learners about courses and applications. This session looks specifically at how to get the best experience from a university Open Day and what sort of questions to ask.

We recommend that this content is delivered to Y12 students from Spring 2019 onwards.

**For other post-16 topics, such as personal statement support and student finance presentations, please contact the individual universities:**

Manchester Metropolitan University  
[post16outreach@mmu.ac.uk](mailto:post16outreach@mmu.ac.uk)

The University of Manchester  
[schoolsandcolleges@manchester.ac.uk](mailto:schoolsandcolleges@manchester.ac.uk)

University of Bolton  
[schoolsandcolleges@bolton.ac.uk](mailto:schoolsandcolleges@bolton.ac.uk)

University of Salford  
[workwithus@salford.ac.uk](mailto:workwithus@salford.ac.uk)

“ I really enjoyed the visit, as the information was *inspiring* and helped me know about the better *opportunities*. ”



## On-campus

Our partner universities host a number of IAG events, which help students to explore HE and prepare for the transition.

### These events focus on:

- Exploring the variety of HE pathways
- Enhancing academic skills
- Preparing for transition

## I-2-1 HE guidance 3 7 8

Our team of graduate advisors have undertaken a Level 3 qualification in information, advice and guidance. They are available to deliver impartial 1-2-1 sessions with target learners using the SACU platform to explore their future options. Taking part in 1-2-1 interviews can help to increase learners focus on higher education.

This can add value to your existing school/college post-16 progression activities and help to meet Ofsted requirements. This intervention is designed to complement existing careers advice provision in schools as it has an explicit focus on planning for HE.

**Please contact your hub manager for further information, contact details can be found on page 11 of this booklet or on our website.**

**More information about SACU:**  
<https://sacu-student.com/gmh>

## Subject-specific activity

Our partners deliver a number of subject-based activities either on-campus, in-school or at an external venue. These fall into three categories:

### Curriculum Connections 4 7

These enrichment activities cover a range of curriculum areas from English and Maths to Business and Law, and from Creative Arts and Media to STEM and Humanities. They are designed to enhance students' current learning, whilst offering an insight into university.

### Subject Tasters 7

These interactive events provide an in-depth experience into what it's like to study a particular subject or discipline at university.

### Industry Insights 2 4 5 7

We aim to provide events that have an industry focus spanning digital, financial, health and engineering amongst many others. These activities are geared towards highlighting the opportunities, careers and employment options higher education can bring, whilst also providing information about progression routes.



# Online Mentoring

Our mentoring programme is delivered online; ensuring safe and secure access anytime, anywhere!

All communication takes place through Brightside's dedicated online mentoring platform. Learners will be matched with an online mentor and they will send and receive messages, and complete e-learning activities designed to support them.



## Insight Programme 2 5 7 8 Y12

Duration: 6 weeks  
Post October half term 2018,  
and January 2019

This project matches mentees with a trained industry or HE mentor with experience of their interested sector. Mentees can ask questions and complete e-learning activities in order to gain an insight into the sector, pathways and key skills.

## HE Explore Programme 7 8 Y12

Duration: 12 weeks  
May 2019 – July 2019

Learners are supported with the initial exploration of institution/course choices, including what to do at open days. Mentors are current HE students studying at one of Greater Manchester Highers' partner institutions.

## Application Programme 7 8 Y13

Duration: 12 weeks  
September 2018 – November 2018

This project supports mentees to explore the benefits of traditional and alternative HE routes. Learners are provided with 1:1 support from a trained HE mentor as they put together their applications, including exploring course and institution options, and personal statement development.

“ I'm beyond grateful for being able to attend something so fab! It's been such a useful 3 days that I will carry with me for the rest of my career. ”

# Uni:4U summer experiences 7

## Y12 June and July 2019

Our Uni:4U programme enables students to gain further insight into higher education through taking part in a number of activities, whilst also getting to work with current HE students and students from other sixth forms/colleges. Some of our Uni:4U events are residential, which provides the opportunity for learners to stay in halls of residence.

For all events food and transport is provided (either every day for non-residential events, or on the first day and last day for residential events).

**Full details will be released early in the spring term and the application deadline will fall before the Easter holidays.**





## Projects <sup>3</sup>

We recognise that not all learners require the same help and support to enable them to make informed decisions about their future, so we deliver a range of engaging and inspiring projects.

These projects are delivered by either our partners or external organisations, and focus on the following:

- Supporting learners with their mental health, wellbeing and resilience
- Transferable skills development (for example public speaking, team work, confidence)
- Academic skills development
- Work with specific groups (for example white boys)
- Parental engagement
- Community engagement

## Teacher and Advisor Continuing Professional Development (CPD)

We provide relevant CPD sessions for teachers and advisors across Greater Manchester who work with post-16 learners advising about HE, our sessions offer a range of themes, which include:

- University Admissions: Insights from an Admissions Officer
- Non-traditional routes into Higher Education
- Qualification reform
- Demystifying Higher Level and Degree Apprenticeships
- Researching Higher Education courses: 'A tale of reputations and intuition'

Available upon request, please email [gmhigher@mmu.ac.uk](mailto:gmhigher@mmu.ac.uk)

## KEY CONTACTS

Our **hub managers** are your single point of contact for engagement with our programme. They can support you to build a coherent and progressive programme of activity for your target learners.




Bury, Bolton, Rochdale	Elin Stewart	<a href="mailto:elin.stewart@boltoncc.ac.uk">elin.stewart@boltoncc.ac.uk</a>
Manchester	Chris Delaney	<a href="mailto:cdelaney@tmc.ac.uk">cdelaney@tmc.ac.uk</a>
Oldham, Stockport, Tameside	Vicky Sinfield	<a href="mailto:vicky.sinfield@tameside.ac.uk">vicky.sinfield@tameside.ac.uk</a>
Salford and Trafford	Andrea Dapoto	<a href="mailto:andrea.dapoto@salfordcc.ac.uk">andrea.dapoto@salfordcc.ac.uk</a>
Wigan	Colin Stanfield	<a href="mailto:c.stanfield@wigan-leigh.ac.uk">c.stanfield@wigan-leigh.ac.uk</a>

Our graduate advisors can support your school to engage with the NCOP programme. This includes organising transport, assisting with visits and working intensively with pupils to support their aspirations.

**Please speak to your hub manager for more information about the support available.**





 @GM\_Higher  
 @GreaterMcrHigher  
 @gm\_higher

[gmhigher.ac.uk](http://gmhigher.ac.uk)  
[gmhigher@mmu.ac.uk](mailto:gmhigher@mmu.ac.uk)