



**UNI:4U  
2026**

# **SCIENTIFIC YOU**

**20 July - 22 July 2026**



# SCIENTIFIC YOU

Hello, thank you for signing up to the Scientific You programme. We're very much looking forward to meeting you, and welcoming you on to our campus.

Please take some time to read through the information in this booklet, as it'll help you prepare for the event.

Although you've already made the decision to choose our summer school, we take this opportunity to remind you of the basics of the programme.

Across the three days you'll:

- meet other like-minded young people from different schools in Greater Manchester;
- Take part in fun, engaging and educational activities led by our very own expert lecturers across varied science subjects;
- Experience our high-end campus facilities and stay in our student accommodation;
- have plenty of time and opportunities to ask questions of our current students.

Best wishes,  
Luke

# Here's what students have said

- It really gave an insight to biology labs in higher education and how they're extraordinarily different to high school.
- I enjoyed having the freedom to follow a method and complete an experiment on my own.
- It was all fun, interesting and different. I enjoyed being in the high-tech lab.
- It helped me understand how my studies now affect my future studies and how university is useful in many ways.



# MEET THE TEAM

**Luke Brophy**



Hello. I am a Schools Outreach Officer, and I will be leading the Summer School. I am a previous student at Manchester Met Uni where I studied French and Politics. I am from Devon so a long way from home! You might hear a bit of a farmer's accent from time to time although I've done my best to hide it over the years. I have done other jobs working with young people, perhaps most interesting was being a football coach at a summer camp in the USA back in 2016. I will be on hand to help you get the most out of your time here during your 3 days with us. Please don't be afraid to reach out if you need anything!

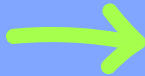


**Ivan Hay**

I'm a School Outreach Manager at Manchester Met, and have been in the team for 10 years. I studied Politics at the University of Central Lancashire after doing A Levels in my home city of Leeds. I lead pre-entry advice and guidance for Care Leavers, and all activities with Local Authorities and young people in care. I will be the safeguarding lead for the event.

# MEET THE TEAM

## **Anotidaishe Manjanja (Ano)**



Hello! I'm a Widening Participation Assistant at Manchester Metropolitan University, and I'll be supporting you during the Summer School. Before working at Manchester Met, I studied Law at the University of Hull, where I also worked. I really enjoy working with young people and being part of programmes like this that help students explore university life and feel confident about higher education. Throughout the three days, I'll be around to support you, answer any questions you might have. So please feel free to come and say hello.



# TIMETABLE

## Monday 20 July

Time	Activity
7:30 onwards	Collection from school
10:30	Welcome to campus
11:30	Icebreakers
12:30	Lunch
13:30	Subject taster
15:30	Break
15:45	Accommodation check-in
17:30	Dinner
18:30	Campus Quest & down time
21:00	Return to flats
23:00	Lights out

# Tuesday 21 July

<b>Time</b>	<b>Activity</b>
9:00	Breakfast
10:00	Subject taster
12:00	Lunch
13:00	Higher education workshop
14:00	Subject taster
16:00	Break (back to flats)
17:00	Evening activity
19:30	Dinner
20:30	Return to flats
23:00	Lights out

# Wednesday 22 July

Time	Activity
9:00	Breakfast
10:00	Store bags and possessions/register
10:30	Higher education workshop
11:30	Lunch
12:30	Closing talk, evaluations & awards
13:30	Depart

Please note timetable is provided as a guide and is subject to change.

# FURTHER INFORMATION

## WHAT TO BRING

- **Clothes -**
  - Firstly, **please don't forget your coat** (we appreciate it's July, but it's still Manchester!)
  - You'll need clothes for the three days and two nights that you're with us. This should be appropriate (i.e. something you'd wear on a non-uniform day at school) and should include comfortable footwear you can enjoy across the days.
  - Also bring an outfit you feel comfortable doing physical activity in i.e. shorts/jogging pants and a comfortable t-shirt and trainers.
- **A towel and personal products -** (e.g. toothbrush, toothpaste, toiletries, sanitary items); we also suggest bringing sun cream.
- **Mobile phone and charger.**
- **Medication -** make sure you bring any medication you need whilst staying with us – we can't buy any medication for you.
- **Water for the coach journey.**
- Feel free to bring any fun games (not electronic) i.e. cards, board games for break times.

# FURTHER INFORMATION

## WHAT NOT TO BRING

- **Excessive amounts of, or inappropriate, clothing.**
- **Expensive valuables** - (e.g. laptops, jewellery).
- **Bedding.**
- **Food items or cookware** - (all meals will be provided).
- **Any intoxicating substances or illegal items.**

## TRAVEL

On the morning of Monday 20 July, you'll be collected by coach, or an alternative, from your school; we expect pickup times to start from around 7:30am. You'll be returned to your school in the afternoon of Wednesday 22 July; you may expect to arrive back at the school from around 2.15pm onwards, depending on the location of your school. You should check the transport itinerary which will be shared with you, and any emails we send, for exact details.

# FURTHER INFORMATION

## PARENT/CARER INFORMATION SESSION

We would like to invite you and your parent/carer to attend an in person information evening. A final date has yet to be decided but we're expecting this to be in July.

This will be an opportunity for your parent/carer to meet some of our staff and find out more about what you'll be doing during the event and to answer any questions you have. While attendance at the information evening is optional, many parents/guardians and children in the past have found it really useful, so we do encourage you to attend if you are able to.

Timings and a date of the meet and greet will be decided shortly and will be communicated to your parent/carer via email. We therefore ask that you please check emails and respond to confirm your attendance.

This event will be recorded and sent out for those who can't attend, along with questions and answers from the night. You're welcome to contact us directly with any questions you have if you're unable to attend.

## ADDITIONAL NEEDS

Please make sure you advise us in advance of any specific needs you have. This includes medical, food and, learning needs. Also note that it's your responsibility to take your medication, and to look after it.

While we've done our best to ensure the accuracy of this information, it's possible that the academic taster sessions will be subject to change; in such a case, we'll seek to provide a suitable alternative.

# CODE OF CONDUCT

While you're on our campus, we expect you to adhere to our Code of Conduct. Unless you tell us otherwise, we assume you accept the Code of Conduct; if you don't accept the Code of Conduct, you can't attend the summer school.

Sanctions, including being removed from the summer school in extreme cases, will be applied to participants who breach the Code of Conduct:

- You'll be respectful towards other attendees, staff members, and property.
- You'll not leave the campus at any point unless authorised to do so; nor will you invite anyone to the campus.
- You are not to roam around campus without supervision.
- Mobile phones will only be used at permitted times.
- No mixing is allowed in accommodation, other than in designated shared areas; you may not swap rooms nor enter each other's rooms.
- Use of intoxicants (including smoking/vaping) is forbidden.
- Online links must not be shared.
- We discourage the use of social media while at summer school; it's a distraction from your experience.
- Taking or sharing photographs or videos of other participants is forbidden.
- You'll not post derogatory comments about the summer school, University, or other participants on social media.
- If you have issues you'd like to raise about the summer school or your experience more broadly, please do so to staff and we'll do everything we can to help and accommodate you.
- Please dress appropriately. Think - if you wouldn't wear it on a non-uniform day at school, please don't wear it on campus.

# FAQs

## **Will the programme be sociable?**

Yes! There will be plenty of opportunity to meet and hang out with other learners from the different schools attending. Although a bit scary at first sometimes, try not to worry as everyone is in the same position! Some downtime has been implemented into the timetable to allow for social times and properly getting to know each other.

We'll be making sure that everyone is as integrated as possible, and has the chance to make new friends along the way.

## **Will there be WiFi?**

Yes. All of campus including the accommodation has free WiFi.

## **Can I contact my parents/carers?**

Yes. Although we'll ask phone use to be at appropriate times, you'll always be able to reach home, and your parents/carers will always be able to contact you.

## **How hard will it be?**

While the programme aims to introduce you to study in higher education, all our workshops are tailored to your age group and will be accessible to everyone. They're designed to have a degree of difficulty that may challenge you as well as ensuring they are fun and engaging, too! Plus, if you don't know much about higher education, we'll be running a short workshop to give you an overview of your options and what it's like to study at university.

# FAQs

## **What food will be available?**

A range of foods will be made available, to suit most dietary requirements. You'll be served breakfast, lunch and dinner although please ensure you eat breakfast at home on the first day as it will not include breakfast. We'll have some snacks and drinks upon arrival. Please let us know of any specific dietary requirements you may have in advance, as it gives us the best chance of securing the items you need.

## **Where will I be staying?**

Accommodation is in flats on our Birley campus site, a short walk from the main university campus. Each flat has 8 en suite rooms. Each attendee will have their own room.

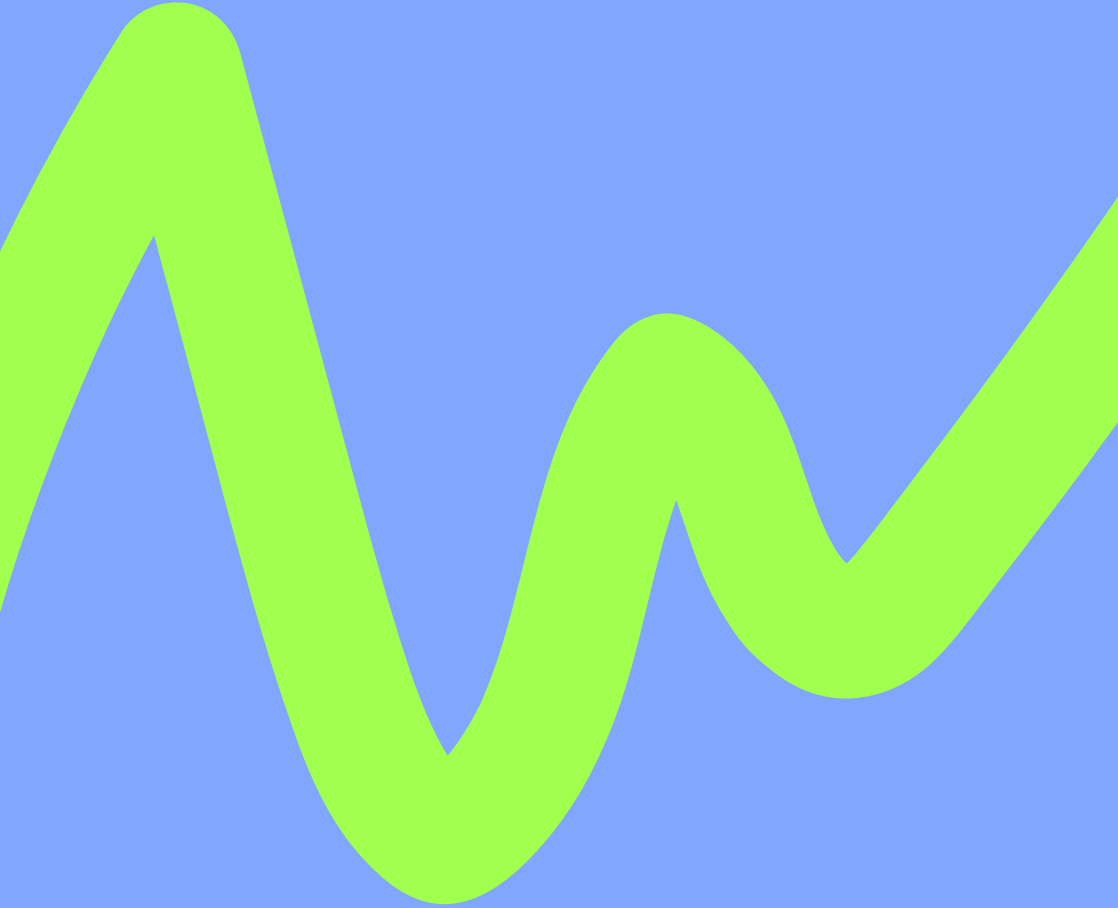
Accommodation for young people will be single sex. At least 2 staff members will supervise each flat. We aim to have same sex staff for each flat however; we reserve the right to deploy opposite sex staff in certain situations. Staff have been Enhanced DBS checked, meaning they've been police checked and are cleared to work with young people. If you've any questions about the accommodation, please contact the event lead directly.

## **CONTACT DETAILS**

You can contact the event lead if you have any questions:  
Luke Brophy, [l.brophy@mmu.ac.uk](mailto:l.brophy@mmu.ac.uk)



Greater  
Manchester  
Higher



[gmhigher.ac.uk](http://gmhigher.ac.uk)

**Instagram** @gm\_higher

**Facebook** @GreaterMcrHigher

**X** @GM\_Higher