



MANCHESTER
CITY COUNCIL

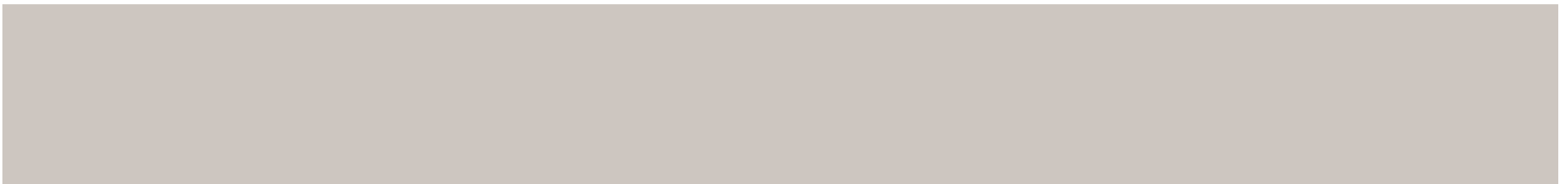
Manchester Virtual School

Supporting The Supporters

Wednesday 6th May

Welcome!

What support can you expect from Manchester Local Authority?



The role of the Virtual School

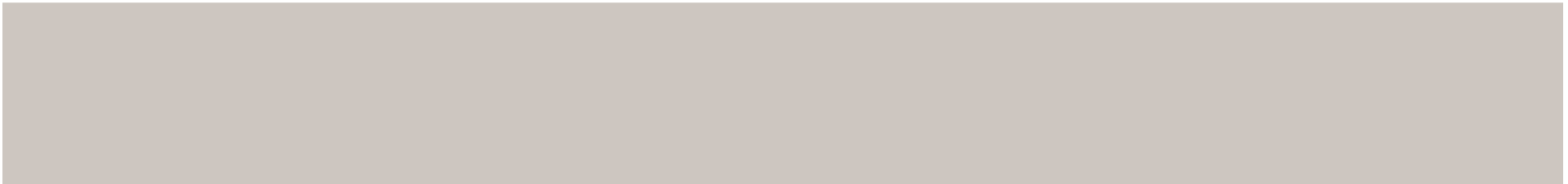


- To champion the education of looked after children and young people (LAC our children) with all partners in and out of the local authority area.
- To ensure all our children/young people pre school – 18yrs have an up to date and high quality Personal Education Plan (PEP).
- To ensure the voice of the young person is being listened and responded to.
- To track and report on the education, employment and/or training (EET) activity for each of our children/young people, regardless of them being in EET or Not in EET.

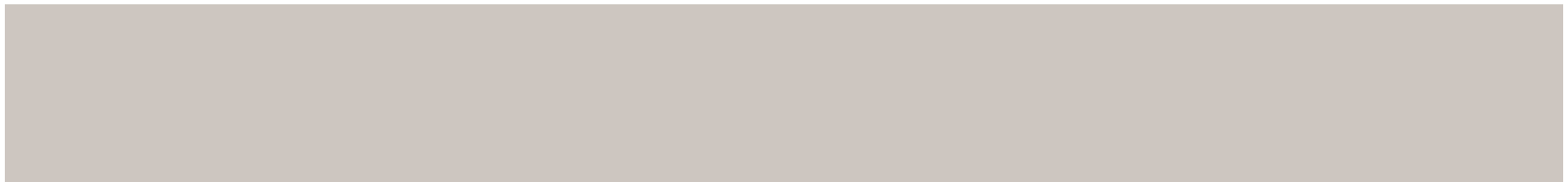
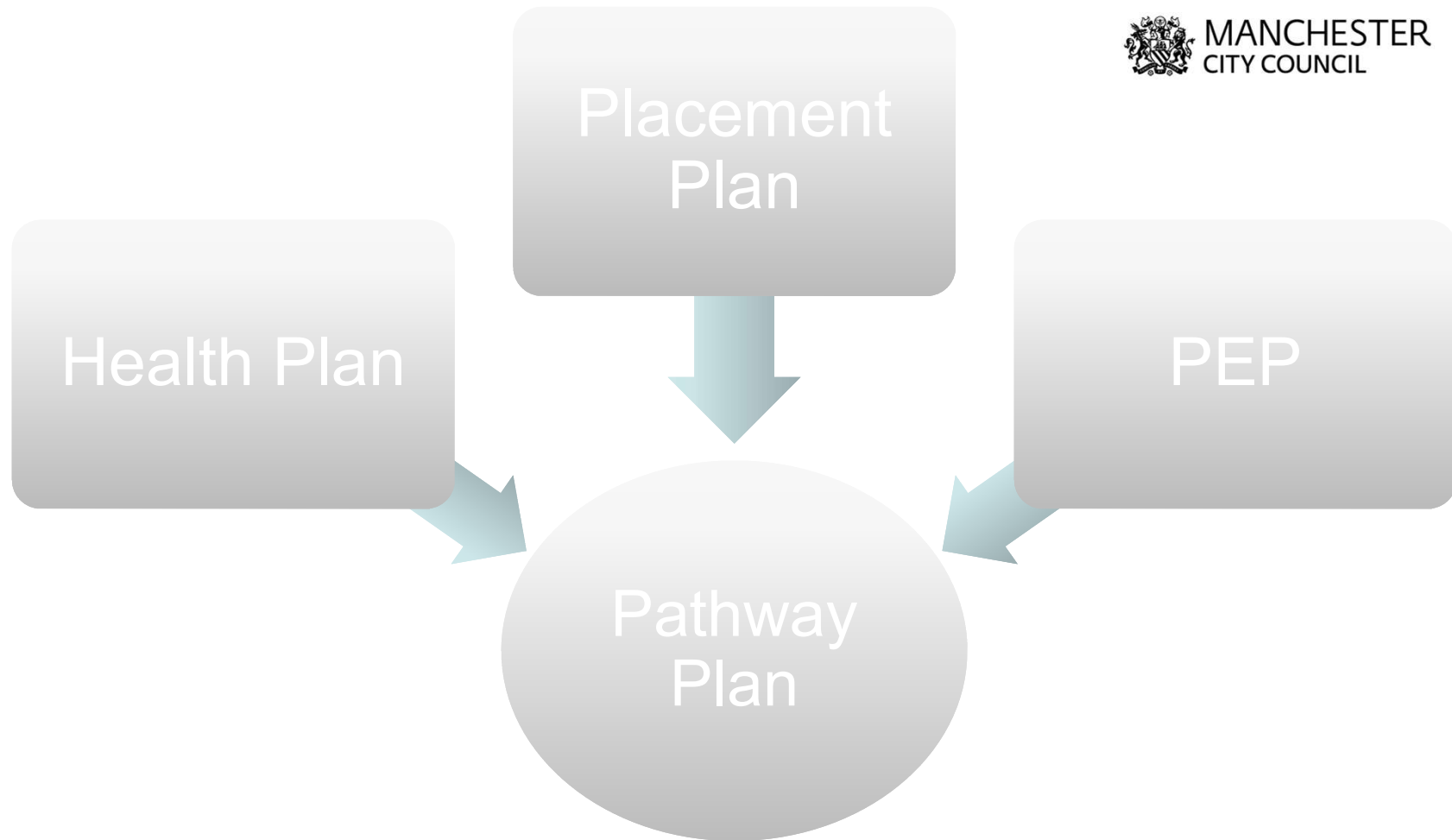
Corporate Parental Responsibility



When a child comes into care, the city council becomes the Corporate Parent. Put simply, the term 'Corporate Parent' means the collective responsibility of the council, elected members, employees, and partner agencies, for providing the best possible care and safeguarding for the children who are looked after by the council.



Care Plan



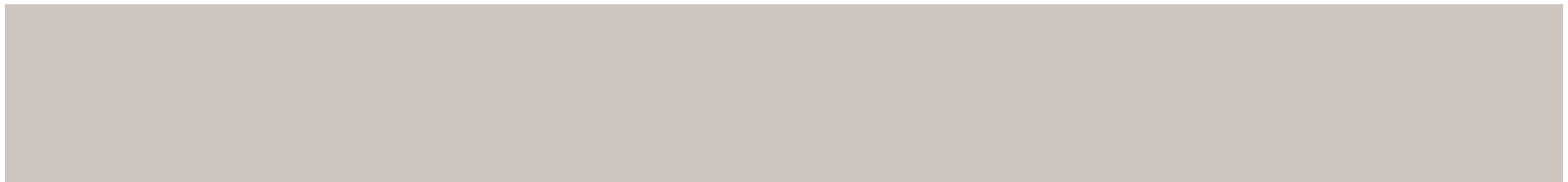
How does the PEP support the young person's journey in education?



The PEP identifies areas for support as well as celebrating achievements and success.

Each term, up to the age of 16, there is up to £600 available to support each young person's educational attainment (released upon successful QA of PEP)

The use of this funding should reflect the needs of the young person and should be agreed by all parties attending and contributing to the PEP

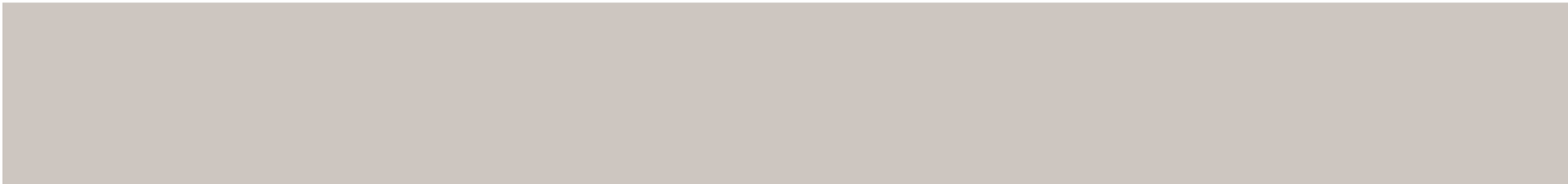


How does the PEP support the young person's journey in education?



The PEP also documents the career aims and aspirations of young people and ensures that conversations around work experience, college applications, aspirations for HE, are taking place at the earliest opportunity.

Post 16 destinations are required so that if necessary VS can liaise and support with the provider if required. This also assists with ensuring there is a smooth transition from school setting to Post 16.



How does the PEP support the young person's journey in education?



Useful to know who might be on hand to support the young person on results day and with enrolment at college/training provider – many young people will want to collect results with friends or independently, but useful to know that there is someone around to provide support if required – ideally a named person.

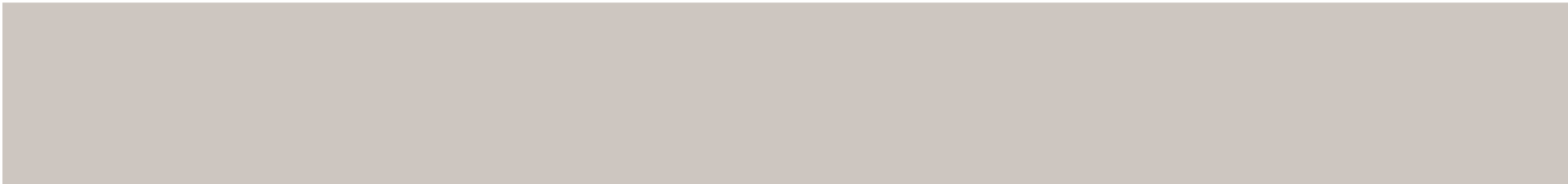
Opportunity to identify young people who may benefit from bespoke arrangements for college visits, open days, enrolment etc

How does the PEP support the young person's journey in education?



Young people who may be struggling and need statutory assessment - VS can support with EP assessment process and discussions around EHCP

Transition from school to Post 16 destination - awareness and overview and confirmation of destinations early in Autumn term of year 12 (and those returning to year 13)



How does the PEP support the young person's journey in education?



Post 16

Requests information from providers to state if YP is receiving bursary and if not, what steps have been taken to address the matter – NOTE – bursary is linked to attendance.

Defined groups bursary – not means tested, evidence to be provided of looked after status – can be provided by Social Worker, Leaving care PA – contact VS if experiencing difficulty. Each provider administers bursary slightly differently.

How does the PEP support the young person's journey in education?



Post 16

Ongoing gathering of information around CEIAG and Gatsby Benchmarks - including university visits, planned and completed.

Opportunities for study camps and special events hosted by HE establishments circulated via the DT network, CEIAG networks and GM Higher.

Lobbying DfE, Ofsted and central government over policy and being part of national networks sharing good practice via NAVSH, ARC etc

Beyond 18?



EET Lead

Virtual School - advice, support and challenge via
EET Lead - 19+ FE courses (Advanced Learner
Loan)

Beyond 18?

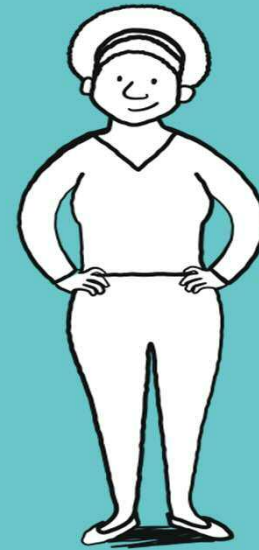


Leaving Care Service - young person will be allocated a PA (eligible, relevant, formerly relevant)

Support with :-

Accommodation - Staying Put - up to 21 (and beyond if at Uni)

Manchester Leaving Care Your entitlements



Weekly maintenance allowance of £57.90

Incentive allowance of

- £10 a week (2 days or less)
- £30 a week (3 days or more)

No payment for easter summer and xmas break if at college but payment made for ½ term break

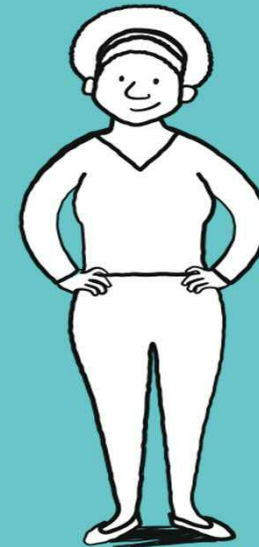
Manchester higher education allowance

- £87.90 a week (maintenance and incentive)
- £54.00 a week accomodation element
- Total £141.90 per week for all elements
- Payments made for 52 weeks a year



You can access a first home grant depending upon an assessment being made of your circumstances in relation to the particular property you are about to move into

First home grant £2000



Passport £72.50

Provisional driving licence - £42 by post

online

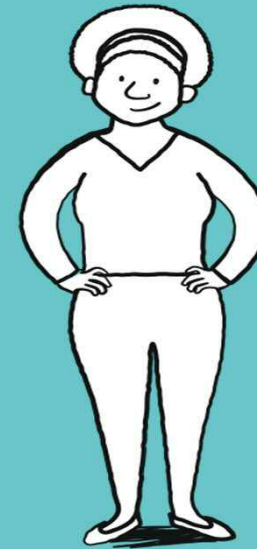
£34

replacement

£20

TV Licence £145.50 for 1 year (from first home grant)

Application can be made for council tax exemption if in Manchester

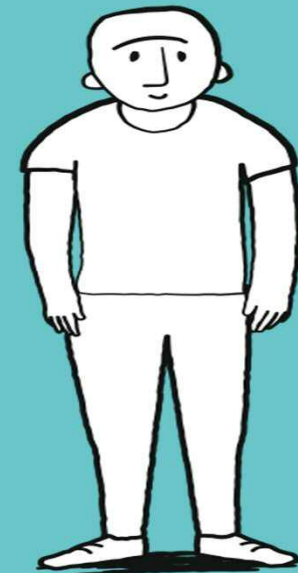


Birthday allowance

Up to 18th Birthday - £242.08

Christmas allowance/religious festival allowance

16/17 year olds £242.08



Virtual School – Key Contacts



Jane Johnson – Virtual School Head

j.johnson2@manchester.gov.uk

07983991337

Lynn Girvan - Deputy Virtual School Head

l.girvan@manchester.gov.uk

07717527751

Ed Salmon – EET Lead

e.salmon@Manchester.gov.uk

07904060871

Liz Smith – Key Stage 4 QA Teacher

l.smith@Manchester.gov.uk

07815 597211

Post 16 - Team

Carolyn Derbyshire Virtual School Post 16 Lead

c.derbyshire@manchester.gov.uk

07815598102

Tim Newman Virtual School Post 16 Progression Advisor

t.newman@manchester.gov.uk

07973936419

Helen Roebuck Virtual School Post 16 Progression Advisor

h.roebuck@manchester.gov.uk

07583018158

Statutory Guidance



- **Local Authority statutory guidance:**
- <https://www.gov.uk/government/publications/promoting-the-education-of-looked-after-children>
- **School statutory guidance:**
- <https://www.gov.uk/government/publications/designated-teacher-for-looked-after-children>

Statutory Guidance



- CEIAG Guidance
- https://assets.publishing.service.gov.uk/government/uploads/system/uploads/attachment_data/file/749151/Careers_guidance-Guide_for_colleges.pdf